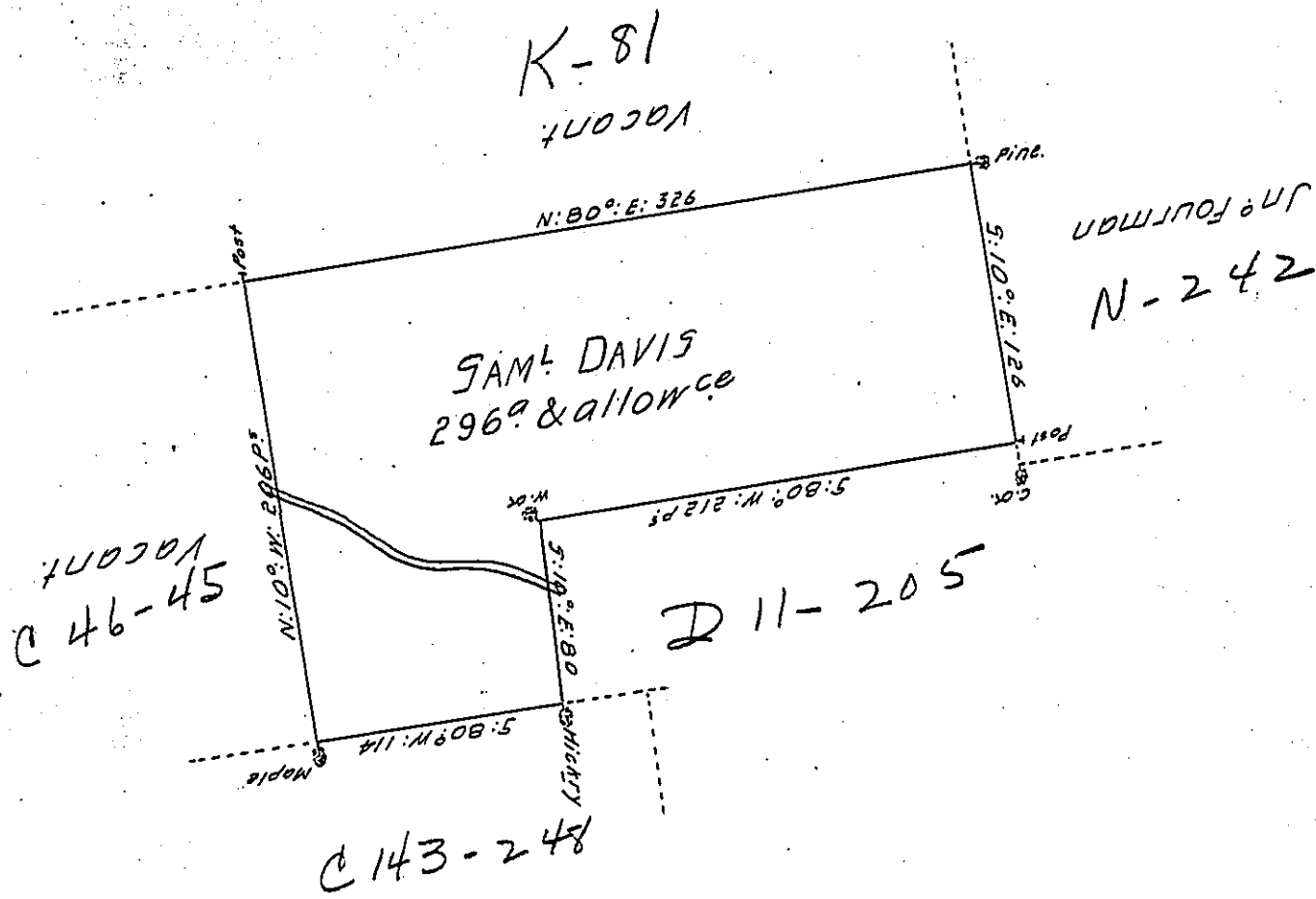


Sug. Loaf -  
Luzerne.



A Draught of a Tract of land called Hatters Hall situate on a branch of Nes-  
copeck about 8 Miles from the mouth including a hunting Cabbin near a path  
leading from Catawassey to Fort Allen adjoining land surveyed for John Four-  
man containing two hundred & Ninety Six Acres besides the usual allowance  
of 6 p-Cent for Roads & <sup>19</sup> surveyed the 8<sup>th</sup> Day of November 1773 for  
Samuel Davis Pursuant to a Warrant Dated the 7<sup>th</sup> Day of August  
1773

by  
To Cha<sup>s</sup> Stewart Dep Sur<sup>y</sup>  
John Lukens Esq<sup>r</sup>  
Survey<sup>r</sup> Gen<sup>l</sup>

IN TESTIMONY that the above is a copy of the original remaining on file in  
the Department of Internal Affairs of Pennsylvania, made  
conformably to an Act of Assembly approved the 16th day of  
February, 1833, I have hereunto set my Hand and caused  
the Seal of said Department to be affixed at Harrisburg,  
this seventh day of July 1904

*Joseph R. Brown*  
Secretary of Internal Affairs.